

Nord Technology

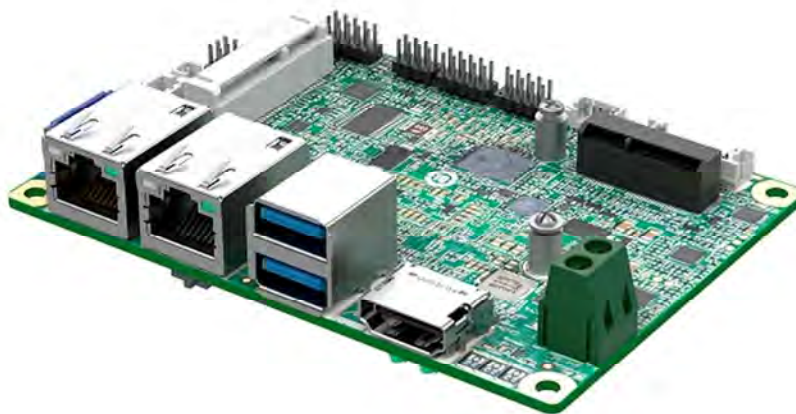
Reseller of JHCTECH hardware in Denmark

NORD TECHNOLOGY CONTACT INFORMATION

World Trade Center
Borupvang 3,
2750 Ballerup,
Denmark

 **Tel.:** +45 70 27 04 15
 **Email:** sales@nord-t.eu
 **Website:** www.nordtechnology.dk

PITX-1915



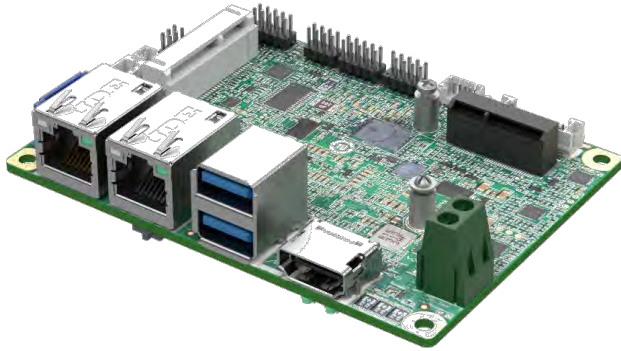
PITX-I915

Intel® Tiger lake U Soc CPU, onboard memory, 1*HDMI, 1*eDP, 2*LAN, 2*USB3.2, 2*COM, 1*M.2 E-key, 1*mSATA, 1*SATA3.0, DC 12V power

JHCTECH

IoT Computer
Connecting the Dots

Single Board Computer-SBC



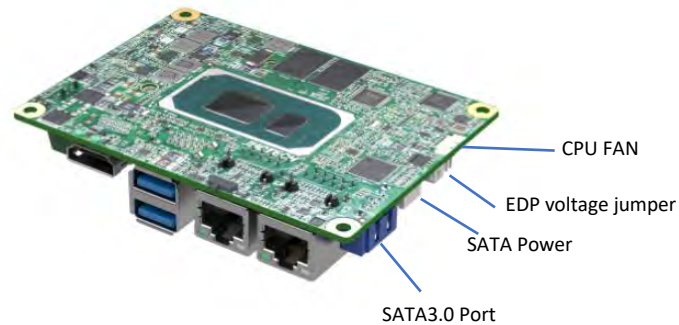
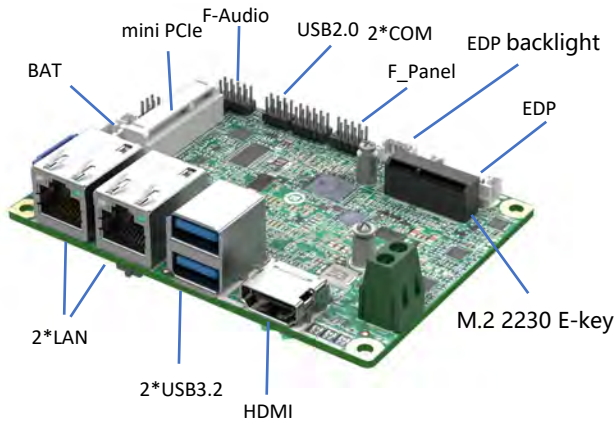
Key Features

- Intel® Tiger lake Soc CPU
- LPDDR4x Onboard memory, up to 16GB
- 1*HDMI, 1*eDP, 2 independent displays
- 2*LAN, 2*USB3.2, 2*USB2.0, 2*COM
- 1*M.2 2230 E-key supports WIFI/BT
- 1*full size Mini PCIe, supports PCIe modules
- 1*SATA3.0 HDD/SSD, 1*mSATA(Opt.) for storage
- Active or passive, two different thickness radiator selection
- DC IN12V

Description

PITX-I915 is a 2.5-inch embedded mainboard equipped with Intel® Tiger Lake U Soc CPU. It has complete IO functions, mini size, active and passive radiators, and the compact size is suitable for installation in limited space scenarios. It is very suitable for AGV and AMR, medical inspection, machine vision, industrial control, digital city and smart security and other industries and fields.

I/O View



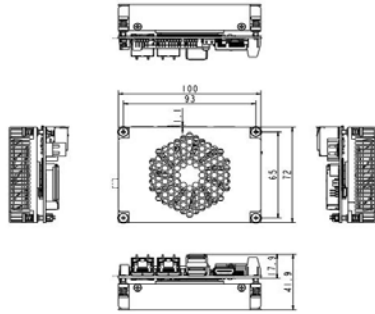
SPEC.

CPU	Intel® Tiger lake U Soc CPU (core i3-1115G4/i5-1135G7/i7-1165G7, Celeron 6305E), TDP 12W/15W/28W
System Memory	LPDDR4x Onboard memory, up to 16GB
Expansion	1* M.2 2230 E-key (USB2.0 signal and PCIeX1 signal), supports WiFi5/BT5.0 1*Full size Mini PCIe(PcieX1 signal), supports PCIe modules, mSATA signal selection can be realized through BIOS
Graphics	Intel UHD Graphics or iRIS® X ^e Graphics, Supports Intel Deep Learning boost, DirectX12.1, OpenGL 4.6 and OpenCL 3.0, HDMI: up to 4096*2304@60Hz, eDP: up to 4096*2304@60Hz, support 2 independent displays
Audio	1*Line out & 1*Line in & Mic in, Realtek ALC897 HD audio chip, support 5.1 channels
LAN	1*Intel I210AT PCIe Gig. Ethernet, 10/100/1000Mbps; 1*Intel®I219LM, 10/100/1000Mbps
Storage	1*SATA3.0 port, supports up to 6 Gbps transmission speed; 1*mSATA (Opt.)
Rear I/O	2*LAN(RJ45); 1*HDMI; 2*USB3.2 (Type A)
Internal I/O	2*USB2.0 (2*4pin dupont pin), 1*RS232/422/485+1*RS232 (two 2*5pin dupont pins), 1*F-audio(2*5pin dupont pin), 1*eDP (2*10pin DF13 port), 1*SATA 3.0, 1*SATA Power, 1*FAN
Switch & LED	1*HDD LED; 1*Power LED 1*F_Panel (PowerSW, Reset, Power LED, HDD-LED), 2x5pin dupont pin; 1*eDP Power supply 12V/5V/3.3V Mode Select jumper
Power Supply	DC 12V (1*3pin phoenix socket TDP: 39.208W (Intel (R) Core (TM) i7-1165G7 CPU @ 2.8GHz)
Watchdog Timer	Programmable timeout interrupt or system reset, 1 to 255 seconds
OS Support	Windows 11*IoT enterprise, Windows 10*IoT enterprise, Android, SUSE, Ubuntu, Wind River, Red Hat*Enterprise, Wind River VxWorks*7, Yocto

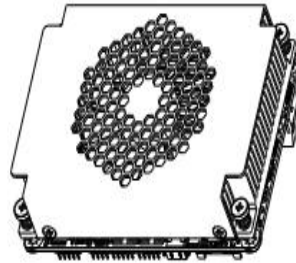
Dimension	(W*H) : 100*72mm
Height	Signal board: 17.9mm, the radiator with fan: 41.9mm, fanless radiator: 32.7mm, PCB: 1.6mm
Operating Temperature	0 ~ 60°C
Storage Temperature	-40°C~85°C
Storage Humidity	10~95%@40°C, Non-condensing
EMC/Certification	CE/FCC Class A

Dimension

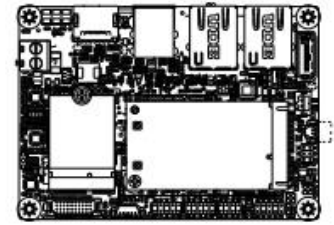
Unit: mm



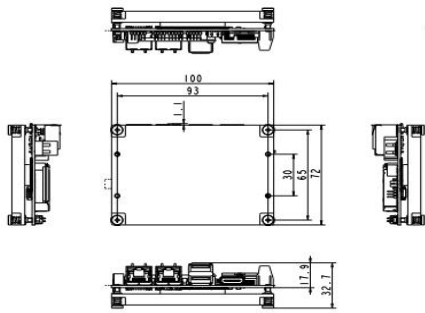
Radiator with Fan



front



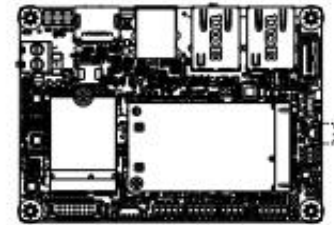
back



Fanless Radiator



front



back

Ordering Info

Model No.	CPU	Memory	Introduction
PITX-I915/S001	Intel® Core I3-1115G4	onboard 8G memory LPDDR4X	2.5" Embedded Single Board Computer, 2*LAN, 2*USB3.2, 2*USB2.0, 1*M.2 2230 E-Key, 1* Full size mini PCIe/mSATA, 2*COM, 1*HDMI, 1*eDP, 1*Audio, 1*SATA3.0, DC 12V
PITX-I915/S002	Intel® Core I5-1135G7	onboard 8G memory LPDDR4X	
PITX-I915/S003	Intel® Core I7-1165G7	onboard 16G memory LPDDR4X	
PITX-I915/S004	Intel® Celeron 6305	onboard 4G memory LPDDR4X	
Radiator with Fan(Optional)	Pure copper+Aluminium alloy heat radiator, four-wire intelligent temperature control ball-bearing fan, silent ultra-thin design, fan cable 85mm, size: 100*72*17.9mm (After installation, the total thickness of the motherboard is 41.9mm)		
Fanless Radiator(Optional)	Pure copper+Aluminium alloy heat radiator, size: 100*72*17.9mm (After installation, the total thickness of the motherboard is 32.7mm)		

Accessory Pack

Standard configuration			Selectinve configuration		
Accessory	description	Amount	Accessory	description	Amount
Serial ports cable	DB9 male, 300mm	1	Audio cable	Three in a row(Line-out/Line-in/Mic) 3.5mm phone jack, 300mm	1
SATA cable	(7+15)pin SATA power supply +SATA data cable, 300mm	1	USB2.0 cable	Two in a row Type A, 300mm	1
Screw jumper package	Two M2 screws +Two jumper caps (spare)	1			